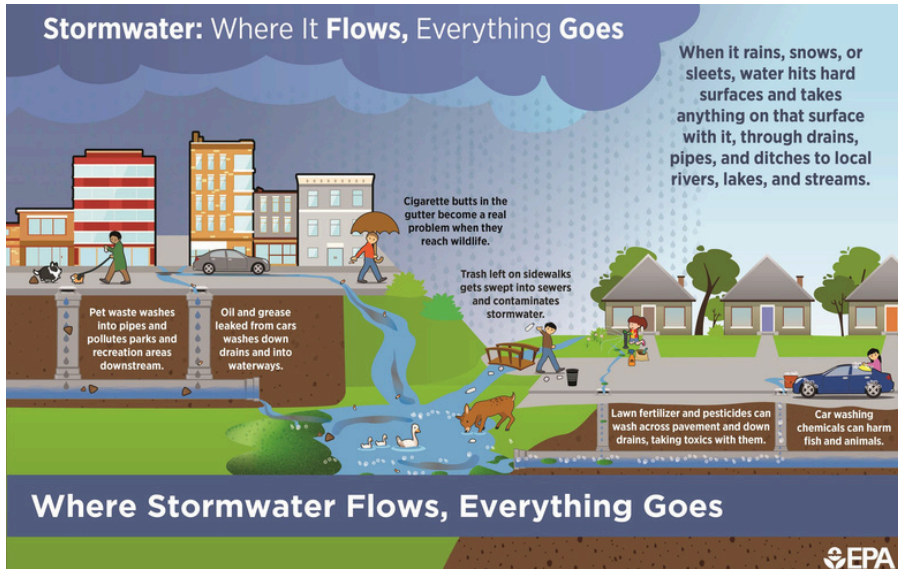


# Guide to MS4

## Municipal Separate Storm Sewer System

April 2026 Edition



### Minimum Control Measures

The permit issued to Lower Allen Township by PA DEP includes 6 Minimum Control Measures.

- MCM 1: Public Engagement & Outreach
- MCM 2: Public Involvement & Participation
- MCM 3: Illicit Discharge Detection & Elimination
- MCM 4: Construction Site Stormwater Runoff
- MCM 5: Post Construction Stormwater Management
- MCM 6: Pollution Prevention and Good Housekeeping

### Stormwater Permit Requirements

To meet requirements from the United States Environmental Protection Agency, the Pennsylvania Department of Environmental Protection requires municipalities, universities, and prisons to obtain a National Pollution Discharge Elimination System permit. The permit is for discharges of stormwater from municipal separate storm sewer systems (MS4s) to streams regulated by DEP. Permits issued after 2017 also contain Pollution Reduction Plans (PRPs) and Pollution Control Measures (PCMs). In order to fulfill the PRP requirements of the permit, Lower Allen Township will be retrofitting the 10<sup>th</sup> basin in 2026 in an effort to reduce sediment reaching waterways.

